

Friston Street, South Park, SW6

£2,000,000





- Master suite & 2 further bedrooms and bathrooms
- Potential to change into a 5 bedroom house (spp)
- 3 reception rooms
- Superb width
- Potential to add pod and extend the kitchen and into the basement (spp)
- Large 30x24 ft garden
- 2028 sq ft
- Close to Thomas's, Marie D'Orliac & South Park
- Council Tax Band G

A rare end of terrace house on a widening plot offering superb width, light, potential and a much larger garden than average. The width of the back of the house is incredible, creating the opportunity to build a stunningly large open plan kitchen/dining/sitting room (spp) leading onto a fantastic large garden which is 30ft at its widest point. The house provides an excellent opportunity to extend and develop to your own taste, crucial longevity whilst being located in a very family orientated area close to excellent parks and schools.

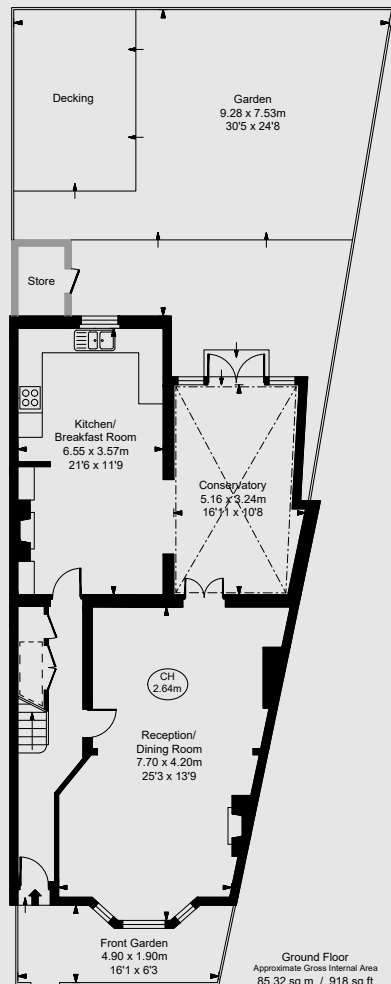
Friston Street benefits from being next to the wide open spaces of South Park as well as Thomas's School. L'Ecole de Petits and Marie D'Orliac and is within easy reach of New Kings Road and Parsons Green for bars, shopping and restaurants and the underground station.



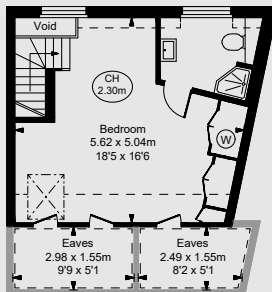


Friston Street, SW6

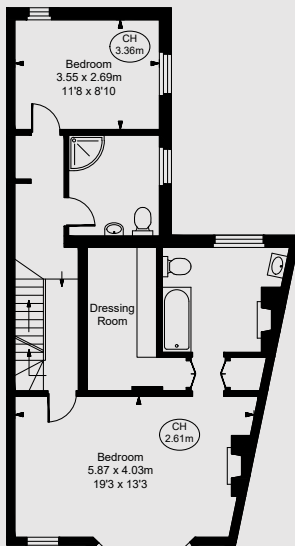
Approximate Gross Internal Area
 177.71 sq m / 1,913 sq ft
 Store
 2.00 sq m / 21 sq ft
 Eaves
 8.73 sq m / 94 sq ft
Total Areas Shown On Plan
188.44 sq m / 2,028 sq ft
 (Including restricted height
 under 1.5m [= = =])
 (CH = Ceiling Heights)



Ground Floor
Approximate Gross Internal Area
85.32 sq m / 918 sq ft



Second Floor
Approximate Gross Internal Area
28.71 sq m / 309 sq ft



First Floor
Approximate Gross Internal Area
63.68 sq m / 685 sq ft



IMPORTANT NOTICE: Tom de Winton Property Consultancy gives notice that: These particulars do not constitute an offer or contract or part thereof. They are not authorized to make any representations or offer any warranties in relation to the property on behalf of themselves or the owner. All descriptions, photos, and plans are for guidance purposes only and should not be relied upon as statements or representations of fact. It should not be assumed that the property has the necessary planning, building consents or other consents and the agents have tested the services, equipment or facilities. Any prospective purchaser must satisfy themselves of the correctness of any information through inspection or otherwise.