

Narborough Street, South Park, SW6

£1,850,000





- 4 bedrooms and 2 bathrooms
- Double reception room
- South facing garden
- Utility area and WC
- 1747sq ft
- Close to Thomas's, Marie D'Orliac & South Park
- Council Tax Band G

A well presented and laid out fully extended 4 bedroom mid-terrace house perfect for the family market, on this popular street with excellent reception space, very well proportioned bedrooms and a lovely south facing garden.

Narborough Street benefits from being next to the wide open spaces of South Park as well as Thomas's School. L'Ecole de Petits and Marie D'Orliac and is within easy reach of New Kings Road and Parsons Green for the excellent local restaurants, bars, shops and the underground station.





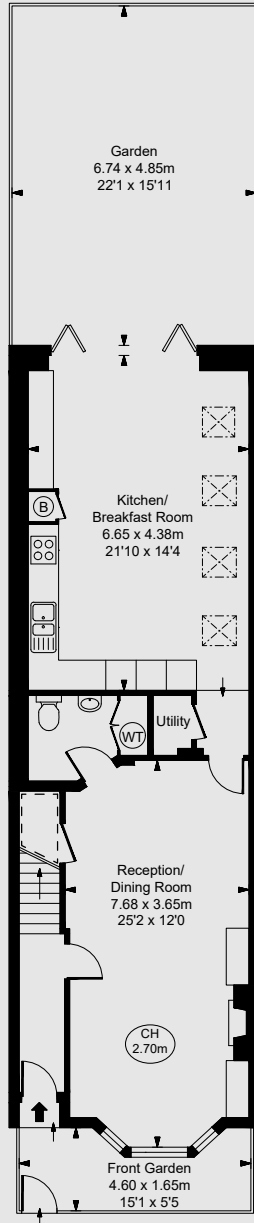
Narborough Street, SW6

■ Approximate Gross Internal Area
156.40 sq m / 1,683 sq ft
■ Eaves Storage
5.90 sq m / 64 sq ft

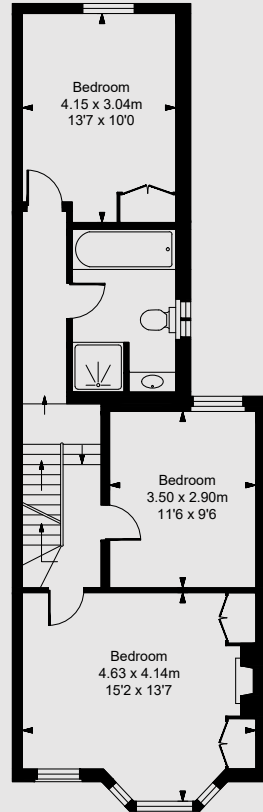
Total Areas Shown On Plan
162.30 sq m / 1,747 sq ft

(Including restricted height
under 1.5m [= = =])

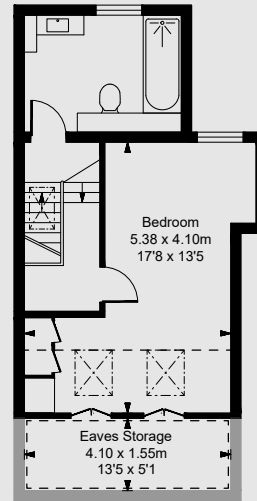
(CH = Ceiling Heights)



Ground Floor
Approximate Gross Internal Area
67.62 sq m / 728 sq ft



First Floor
Approximate Gross Internal Area
58.05 sq m / 625 sq ft



Second Floor
Approximate Gross Internal Area
30.73 sq m / 331 sq ft

This plan is not to scale. It is for guidance and not for valuation purposes.
All measurements and areas are approximate only, and have been prepared in accordance with the current edition of the RICS Code of Measuring Practice.
© Fulham Performance



IMPORTANT NOTICE: Tom de Winton Property Consultancy gives notice that: These particulars do not constitute an offer or contract or part thereof. They are not authorized to make any representations or offer any warranties in relation to the property on behalf of themselves or the owner. All descriptions, photos, and plans are for guidance purposes only and should not be relied upon as statements or representations of fact. It should not be assumed that the property has the necessary planning, building consents or other consents and the agents have tested the services, equipment or facilities. Any prospective purchaser must satisfy themselves of the correctness of any information through inspection or otherwise.